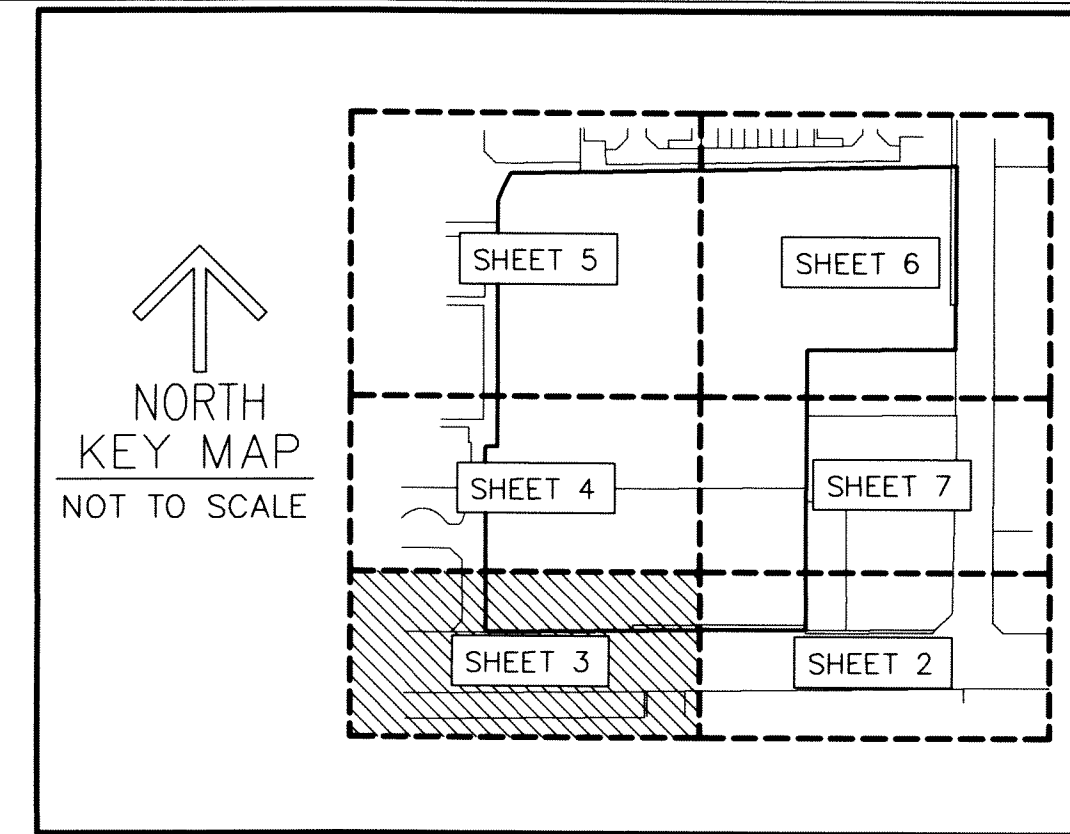


THIS INSTRUMENT PREPARED BY
 DAVID P. LINDLEY
 OF
CAULFIELD and WHEELER, INC.
 SURVEYORS - ENGINEERS - PLANNERS
 7900 GLADES ROAD, SUITE 100
 BOCA RATON, FLORIDA 33434 - (561)392-1991

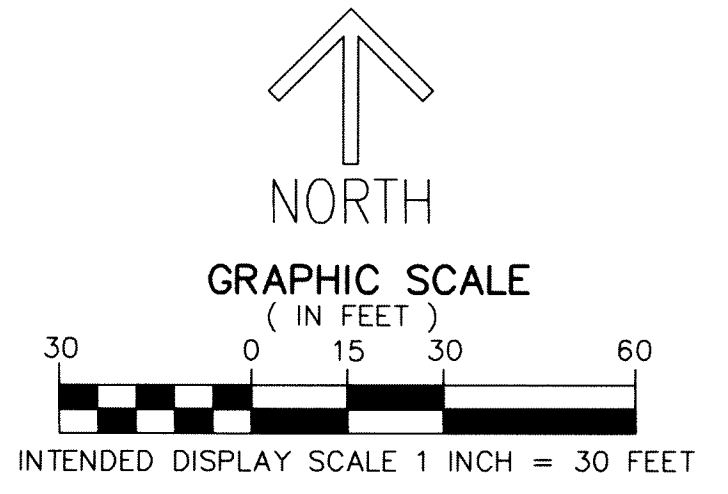
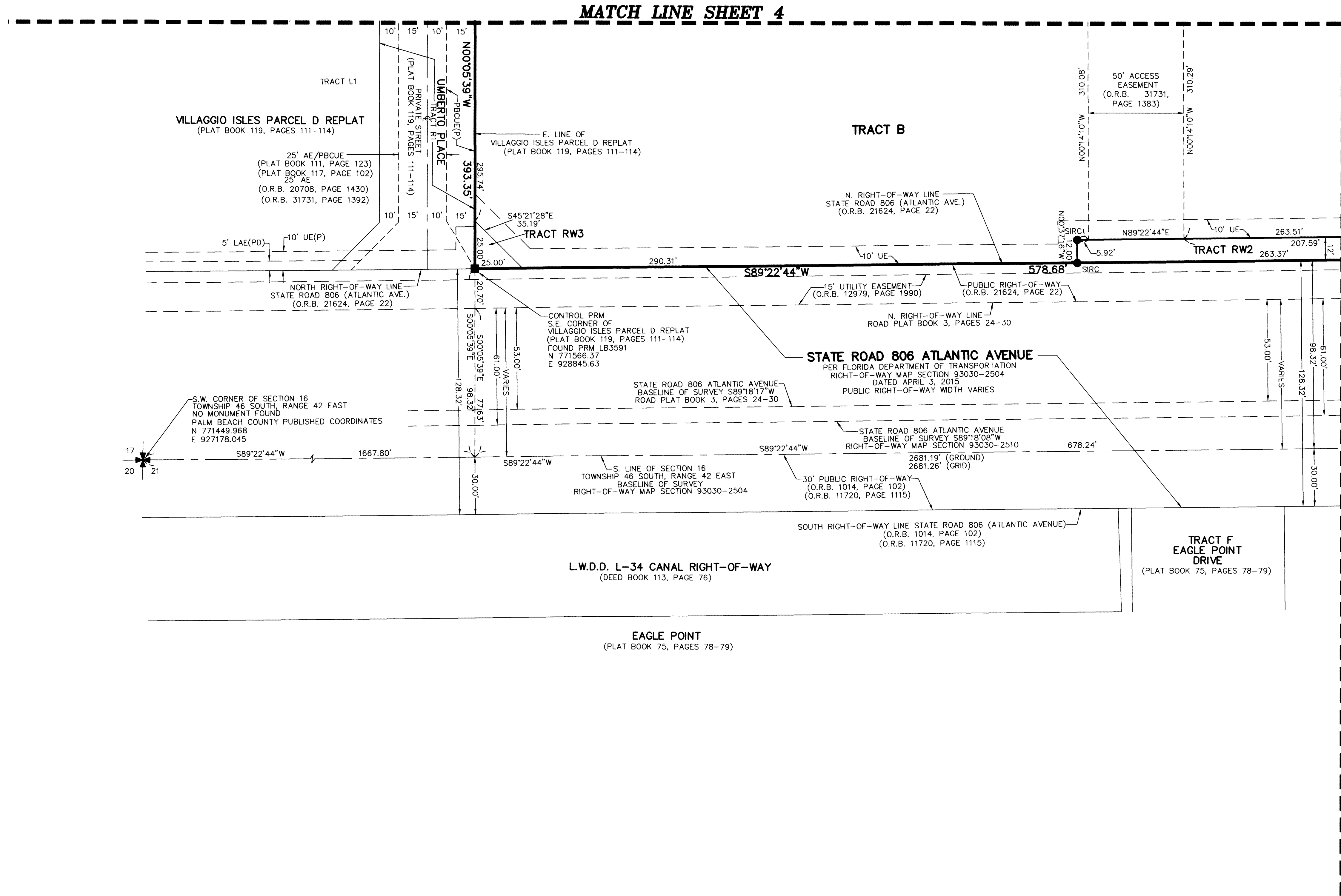
TERRA NOVA MUPD

BEING A REPLAT OF A PORTION TRACTS 105 THROUGH 107 AND TRACTS 117 THROUGH 119
 OF THE PLAT OF SUBDIVISION OF S.E. 1/4 AND W. 1/2 OF S.W. 1/4
 OF SEC. 16 TOWNSHIP 46S RANGE 42E, AS RECORDED PLAT BOOK 1, PAGE 158
 OF THE PUBLIC RECORDS OF PALM BEACH COUNTY, FLORIDA
 LYING IN SECTION 16, TOWNSHIP 46 SOUTH, RANGE 42 EAST, PALM BEACH COUNTY, FLORIDA



30

SHEET 3 OF 7



NOTES
COORDINATES, BEARINGS AND DISTANCES
 COORDINATES SHOWN ARE GRID
 DATUM = NAD 83 1990 ADJUSTMENT
 ZONE = FLORIDA EAST
 LINEAR UNIT = US SURVEY FEET
 COORDINATE SYSTEM 1983 STATE PLANE
 TRANSVERSE MERCATOR PROJECTION
 ALL DISTANCES ARE GROUND UNLESS OTHERWISE NOTED
 SCALE FACTOR = 1.0000270
 GROUND DISTANCE X SCALE FACTOR = GRID DISTANCE
 BEARINGS AS SHOWN HEREON ARE GRID DATUM,
 NAD 83 1990 ADJUSTMENT, FLORIDA EAST ZONE.

LEGEND/ABBREVIATIONS
 C - CENTERLINE
 Δ - DELTA (CENTRAL ANGLE)
 AE - ACCESS EASEMENT
 DE - DRAINAGE EASEMENT
 L - ARC LENGTH
 LAE - LIMITED ACCESS EASEMENT
 LB - LICENSED BUSINESS
 MTE - MASS TRANSIT EASEMENT
 MUPD - MULTIPLE USE PLANNED DEVELOPMENT
 (NR) - NON-RADIAL
 O.R.B. - OFFICIAL RECORD BOOK
 PBCUE - PALM BEACH COUNTY UTILITY EASEMENT
 PNT - POINT OF NON-TANGENCY
 R - RADIUS
 SEC. - SECTION
 UE - UTILITY EASEMENT
 ■ PRM - DENOTES PERMANENT REFERENCE MONUMENT
 4" x 4" x 24" CONCRETE MONUMENT STAMPED
 LB3591 UNLESS OTHERWISE NOTED
 SIRC ● - DENOTES SET 5/8" IRON ROD WITH CAP
 STAMPED "C&W LB#3591"
 (P) - DENOTES VILLAGGIO ISLES PUD REPLAT
 AS RECORDED PLAT BOOK 117, PAGES 102-109
 OF THE PUBLIC RECORDS OF PALM BEACH COUNTY, FLORIDA
 (PA) - DENOTES VILLAGGIO ISLES PARCEL A-1 REPLAT
 AS RECORDED PLAT BOOK 118, PAGES 181-182
 OF THE PUBLIC RECORDS OF PALM BEACH COUNTY, FLORIDA
 (PD) - DENOTES VILLAGGIO ISLES PARCEL D REPLAT
 AS RECORDED PLAT BOOK 119, PAGES 111-114
 OF THE PUBLIC RECORDS OF PALM BEACH COUNTY, FLORIDA